

# THERMOFORMING CAMBRIA

## TECHNICAL GUIDELINE



## SHAPING EXCELLENCE, CRAFTING ELEGANCE

Where precision meets beauty, and every curve and contour is crafted to perfection, the success of a thermoforming application relies heavily on the fabricator's knowledge and skill set. As a designer, here are some tips for you to consider.

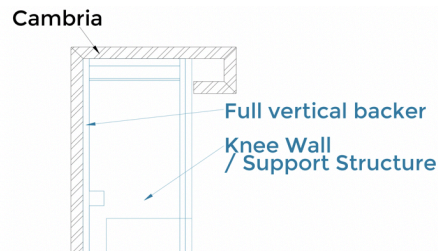
### DESIGN CONSIDERATIONS

- Full vertical backer is recommended for the thermoformed drop edge or thermoform application. **See Figure 1.**

**Confidential and Proprietary.** This document and the information contained herein is confidential and proprietary to Cambria Company LLC ("Cambria"). It may not be copied, reproduced, modified, made available, or disclosed without Cambria's prior written consent. Cambria assumes no responsibility, wholly or partly, for any of the design, safety, or workmanship of any installation and/or fabrication.

# THERMOFORMING CAMBRIA

## TECHNICAL GUIDELINE



**Figure 1**

- Any voids between the substrate/backer and the Cambria material must be filled with a bonding agent during installation.

### MINIMUM RADIUS REQUIREMENTS

- 120" minimum inside radius
  - A variety of Cambria designs can be thermoformed to a minimum 70" radius
- The following Cambria designs cannot be thermoformed:
  - Coastal Collection™
  - Minera™
  - Annicca®
  - Alloy Collection™
  - Inverness® designs
  - Clovelly™
  - Brighton™
- The following documents should be referenced regarding support and installation:
  - CSI Guide | Counter & Horizontal Surface
  - CSI Guide | Vertical Applications
  - Countertop Installation Technical Guideline

Please contact your Cambria Commercial Market Representative or the Technical Services Hotline at 1-888-7QUARTZ (1-888-778-2789) for design inspiration and additional information.



**Confidential and Proprietary.** This document and the information contained herein is confidential and proprietary to Cambria Company LLC ("Cambria"). It may not be copied, reproduced, modified, made available, or disclosed without Cambria's prior written consent. Cambria assumes no responsibility, wholly or partly, for any of the design, safety, or workmanship of any installation and/or fabrication.