

INSIDER: RENOVATION
CHECKLIST

*ALL THE
DETAILS:* COLOR AND
COUNTERTOPS

*BOLD
IDEAS:* PLAN YOUR
LAYOUT

KITCHEN & BATH

D E S I G N I N S P I R A T I O N



*THE
ULTIMATE
DESIGN
PLANNER*



CAMBRIA

Design shown: INVERNESS COBALT™

THE ULTIMATE SIDEKICK

There are few spaces in a home where we spend more time than our kitchen and bathrooms. How those areas work for us has a direct correlation to how happy we are with our home. Whether you are remodeling, building new, or doing a quick refresh, it's important to take a step back and plan carefully so you can create a process that unfolds smoothly and a space that functions well and inspires you every day.

THIS PLANNER BELONGS TO

PROJECT DETAILS

PROJECT: _____

START DATE: _____

DEADLINE: _____

BUDGET: _____

DOWNLOAD

this Kitchen & Bath Planner as a handy reference tool filled with strategic tips, expert advice, and an abundance of inspiration. Bring it along when shopping for design options and for guidance when interviewing design professionals.



Design shown:
BENTLEY™

RENOVATION CHECKLIST

BEFORE YOU BEGIN

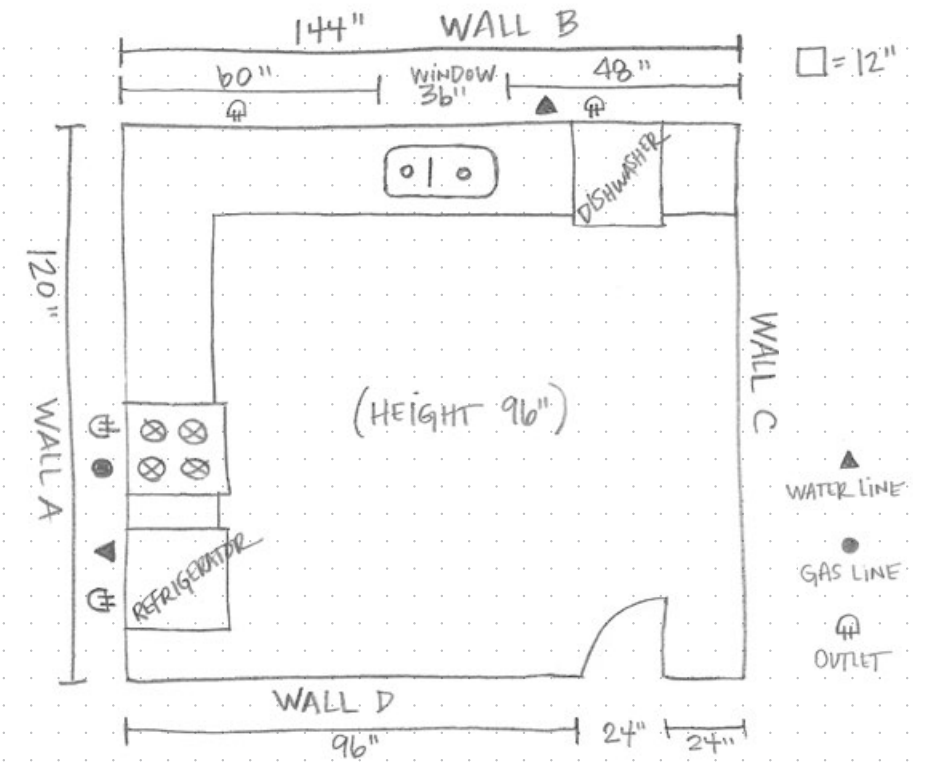
- Establish a ballpark budget.
- Measure your space and create a floor plan (see right).
- Gather inspiration images you like (and some you don't like).
- Determine what doesn't need replacing (Newer kitchen appliances? Sound cabinets? You could keep them!).
- Browse products to see if your ideas will fit your budget.
- Know your timeline.
- Prepare your family for some disruption.
- Prepare your house for dust and noise. Use plastic or heavy-duty paper to cover the floors in surrounding areas, seal off the room with plastic sheeting—but don't forget to create a temporary door.
- Take "before" pictures.
- If you're planning to re-use appliances, record all the model numbers and dimensions before you move them out of the space.

CREATE A LIST OF PRIORITIES

- Family-friendly comfort
- Entertaining haven
- Storage for days
- Home-chef amenities
- Ready for resale
- Top-notch technology

MAKE YOUR WISH LIST

- Underfloor heating
- Wine and beverage center
- Built-in coffee bar
- Second dishwasher
- _____
- _____



HOW TO MEASURE YOUR KITCHEN

Use these tips for creating a handy homemade set of measurements.

- 1** On gridded paper (it's easier) sketch out an outline of your kitchen. This doesn't need to be to scale.
- 2** Add in the general location of any windows, doorways, columns, etc.
- 3** Add in the general location of sink and appliances.
- 4** With a laser measure or a good old-fashioned measuring tape, measure the length of all walls. If there are any obstructions, like a fireplace, include that in the overall wall length as well. Indicate those dimensions on your plan.
- 5** Measure the height of your room and include any soffits (the parts of the ceiling that step down, often above a cabinet). Also measure the height of soffits from both ceiling and floor.
- 6** Measure windows and doors from the outside edge of the trim on one side to the outside edge of the trim on the other. Next, measure the height of the doors and windows, from the floor to the top of the trim. Lastly, measure from the nearest corner to the center of each window and door. Note all these measurements on your sketch.
- 7** Locate any utilities, like water supply and drain lines, electrical outlets, and HVAC vents. If you can't see the gas line, just measure to the center of the range. Add these locations to your plan.

Prefer to create a digital floorplan? Online resources like [smartdraw.com](https://www.smartdraw.com) can help.
- 8** Finally, take some pictures of the space, including views of all the walls. Bring all this information with you when meeting with potential designers, builders, remodelers, or product providers.

KNOW YOUR PRO

Are you starting from scratch or investing in a few statement-making upgrades? Use this guide to take the guesswork out of who you should hire.

Certified Kitchen & Bath Designer

These professionals specialize in the design, planning, and execution of residential kitchens and bathrooms, and have extensive knowledge of building codes, appliances, and mechanical systems. To be certified, they must have a minimum of five years of experience, with at least two years dedicated to full-time residential kitchen and/or bath design.

GET CONNECTED TO A KITCHEN & BATH PROFESSIONAL NEAR YOU. visit CambriaUSA.com/Dealer

Architect

Architects plan, design, and draft the layout of a home. They see the big picture and will ensure the entire vision is properly executed. Each state sets its own licensing standards, but in general, licensed architects have an architecture degree from an accredited program, have real-world experience under the supervision of a licensed architect, and passed a professional exam.

General Contractor

Many contractors are well-equipped to manage a simple remodel. They oversee the construction, facilitate the day-to-day tasks, and are knowledgeable regarding materials, labor, and permits. Licensing requirements vary, so do your homework before hiring a contractor: Ask for estimates, review past projects, check references, and inquire about insurance.

Interior Designer

These experts respond to and enhance the look and function of a room, while also taking into consideration technical aspects of the design process. They work with materials, lighting, and furniture to design the experience of a space. Most receive formal training to study color, fabric, CAD, drawing, spatial planning, and furniture design.



Design shown:
BRITTANICCA GOLD WARM™

THE BIG 3 BUYING GUIDE APPLIANCES, COUNTERTOPS & CABINETS

APPLIANCES

Once you've measured your space, narrow down options that will fit and also suit how you function in your kitchen. Consider stainless steel, colors, or cabinet panels to personalize. Don't forget the vent hood as a potential focal point in your décor and for vital ventilation.

COUNTERTOPS

Cambria makes selecting a countertop a breeze with an array of beautiful designs that elevate any look from traditional to modern. Add to that the durability and transferable Full Lifetime Warranty, and it's a win-win.

CABINETS

Cabinetry is the epitome of form and function in a kitchen. It needs to optimize space for storage and support the home cook. Additions like pullout drawer shelves, base cabinet pantries, and full-height storage options do just that.

▶ TO SEE MORE KITCHEN INSPIRATION, visit CambriaUSA.com/Inspiration



TO ORDER A SAMPLE, go to Shop.CambriaUSA.com

REMEMBER THESE ESSENTIALS

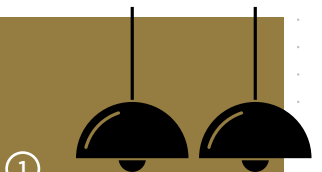
They're not the most exciting remodeling elements, but if you forget them, you'll wish you hadn't.

- Under-cabinet lighting to illuminate your countertop work areas. Dimmer switches for the dining area and above-island lighting.
- Plenty of electrical outlets for plugging in small appliances. Consider adding USB ports for family tech.
- Backsplash for sink and range. Cambria quartz surfaces provide a gorgeous and seamless look that is maintenance free.
- Countertop-installed soap dispensers and disposal switches.

REASONS TO CHOOSE CAMBRIA QUARTZ

- 1 **MADE IN THE USA**
American-made craftsmanship combined with a family-owned philosophy of artistry, innovation, and ongoing service.
- 2 **MAINTENANCE FREE**
Cambria is an investment in your home that will last for years. Stain- and scratch-resistant quartz surfaces are easy to clean, never require sealing, and are certified food safe.
- 3 **FULL LIFETIME WARRANTY**
Cambria offers a transferable Full Lifetime Warranty that adds to the value of your home—a win for you and the next homeowner.
- 4 **UNMATCHED QUALITY**
Attention to detail begins with the finest natural material. What that means for you is depth and clarity that is unmatched by any other quartz product.
- 5 **EXTENSIVE DESIGN PALETTE**
Whether you're going for modern or transitional or luxe, Cambria's extensive design palette will make a statement.
- 6 **ONGOING SERVICE**
With just one phone call, get expert, personable service from a live Cambria Customer Care representative at 1-866-CAMBRIA (1-866-226-2742).

4 FINISHING TOUCHES for your KITCHEN



- 1 **LIGHTING**
Mix lighting types: ambient for mood, task for meal preparation, and decorative for over the island and table.

- 2 **BARSTOOLS**
Factors to keep in mind include height, style, and comfort. Be sure to arrange with enough space between stools for each person to move freely.



- 3 **HARDWARE**
In addition to visual appeal, cabinet and drawer knobs and pulls should be in proportion to the doors and drawers on which they'll be used.



- 4 **SINKS/ FAUCETS**
Pull-down spray nozzels, semi-professional functionality, and touchless or tap technology are upgrades to consider.



KITCHEN CONFIDENTIAL

DO THESE 6 THINGS TO CREATE YOUR DREAM KITCHEN

1 PREPARATION IS KEY

- Think about your lifestyle: Are you an avid cook? Is it a family space? Do you entertain large groups often?
- Evaluate your existing kitchen: Do you need more storage? Larger prep surfaces? What do you love? What do you want to change?

2 GET THE NUMBERS RIGHT

- Set your budget.
- Focus on your needs first, wants second.
- Leave room in your budget for the upgrades and extra touches that catch your eye as your project unfolds.

3 TRUST THE EXPERTS

- Be specific and forthcoming about your project goals.
- Be honest and firm about your budget.
- Select a professional you feel comfortable communicating with.

4 FOCUS ON FLOW

- Measure the size/square footage for spatial planning.
- Think about the infrastructure, such as electrical or plumbing concerns.
- Determine dining and entertaining needs.
- Make sure your workflow in the space works for you.

5 MANAGE EXPECTATIONS

- Make selections that can meet your timeline and don't start your project until all of your pieces have arrived.
- Choose quality USA-made products like Cambria to minimize risk of your selections not being available or arriving damaged.

6 PERSONALIZE

- Customize to your family's daily living, with open shelving, wall hooks, and storage solutions.
- This is when you may be inspired as to where to showcase heirlooms, artwork, and collectibles.
- Add DIY elements like wallpaper or a bold paint color to a wall or two.

6 BIGGEST MISTAKES TO AVOID

OVERLOADING WITH CABINETS

Physically and visually too many upper cabinets will feel cramped and destroy beautiful sight lines.

NOT ENOUGH STORAGE

Be thoughtful about planning for storage. Fewer upper cabinets and more highly functional base cabinets combined with open wall shelves and racks along with a closet pantry will be much more effective.

NOT ENOUGH LIGHTING

Add statement pendant lights over your sink and island, but don't expect those statement lights to light your work areas. Focus light on those hardworking areas with recessed lights.

ONLINE ORDERS FOR CRITICAL PIECES

Don't rely on shipping or companies outside the US to deliver what you need. Stick to companies in the US and known sources for your critical items—which is everything outside of décor. If you can't finish your kitchen without it—it's critical.



NOT ENOUGH COUNTER SPACE

Expand your counter space wherever you can. Overhangs, a base cabinet around a corner with a countertop for a coffee bar, a peninsula that wraps around a wall. There is NEVER enough counter space.

LOW-QUALITY MATERIALS FOR CRITICAL SPACES

There are things that you simply need to spend money on because they get the most use: your cabinets, your countertops, plumbing pieces, and your appliances. Each will take a beating.

do

Ask your contractor to add support backing to walls where you may want to install shelving later on your own. Give yourself time to take a breath and be thoughtful where the option presents itself.

Leave walls primed for awhile if you can't decide on a color. Live in the space for a bit and paint when you feel ready.

Enjoy the process. Renovating is stressful, especially when you are living in it. Don't feel as though you need to finish spaces all the way down to the décor—you will likely regret many of those decisions. Décor is where your personality really shines, so enjoy the journey.

HIGH PROFILE

ALL IN THE DETAILS

Once you select a countertop design that best suits your style, be sure to explore available edge profile options. Edge profiles may seem like a minor detail, but this design element plays a large role in the final aesthetic of your kitchen and bath.



▲ RIDGELINE
This classic profile features a flat border for a clean finish.



▲ RIMROCK
A mitered edge gives the illusion of a much heavier countertop.



◀ SUMMIT
Rounded edges on the top and bottom create a soft profile.



▲ SEACLIFF
Beveled as opposed to rounded edges give just a touch of ease.



BASIN ▶
A thin countertop edge with a subtle yet decorative flourish.

 **VIEW ALL EDGE PROFILES at CambriaUSA.com/Edges**
Please note: Not all designs are available in all edge profiles.



RESOURCES & TOOLS


Visual tools can be a big help in planning a physical space. Some go-to resources to try:

MOOD BOARDS

Creating a mood board is a great low-tech starting point for visualizing how your preferred interior design selections will look together. Mix and match a variety of flooring, fixtures, fabrics, tile, paint, and surface samples to envision your personalized space. Also, consider spending less on items you can update more often.

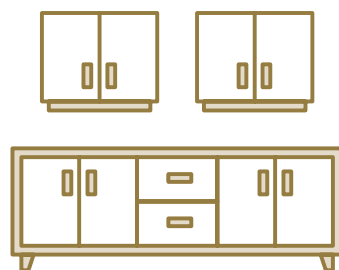
PAINT MATCH TOOL

Cambria's partnership with Benjamin Moore allows you to find the perfect paint to match any Cambria quartz design. Simply enter any design from Cambria's extensive design palette and see a variety of complementary paint color suggestions.

 **TO EXPLORE PAINT PAIRINGS, visit CambriaUSA.com/Paint**

SPEND OR SAVE? WHERE TO INVEST YOUR BUDGET

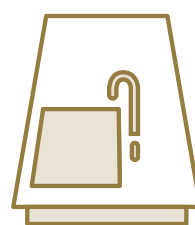
SPEND IT



1

CABINETS

You'll use your cabinetry every day, and it's very expensive to replace—so if you are replacing, invest in the best quality you can afford.



2

COUNTERTOPS

Nonabsorbent surfaces that are easy to keep clean are the name of the game here. Cambria is a beautiful and durable American-made quartz surface that boasts a transferable Full Lifetime Warranty.



3

APPLIANCES

How many times a day do you think your refrigerator and dishwasher are opened? Spend the money to get appliances that will last, serve your needs, AND look beautiful in your space.

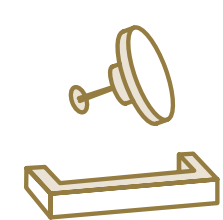
SAVE IT



1

LIGHTING

Lighting is an important way to add personality and flair (as well as illumination!) to your space, but you don't have to buy pricey designer styles to get a look you'll love.



2

HARDWARE

Upgrading hardware is a quick way to revamp your space, but it's unlikely anyone else will notice if you shop the sale section here.

EXPERT TIPS
LIVING + eating
THROUGH A
KITCHEN REMODEL

**CREATE A
TEMPORARY KITCHEN**

No matter how much takeout you bring home, you'll still need a spot to make school lunches, pour a bowl of cereal, or brew coffee. Set up a temporary kitchen somewhere that's out of the way of construction, like in the dining room or basement.

**STICK WITH THE
ESSENTIALS**

Construction will disrupt your cooking and eating routine, no matter what. With no working range or cooktop, you'll mostly be assembling refrigerated items and reheating in the microwave. This means you won't need your full collection of pots and pans, knives, tools, etc. Stash the essentials close at hand and store the rest. This is a good time to donate or discard anything you haven't used in a while.

**PLAN MEALS AROUND
SMALL APPLIANCES**

Slow cookers, microwaves, toaster ovens, air fryers, electric griddles and skillets, hot plates, and coffee makers can get you over the mealtime hump. Move your fridge to your temporary kitchen, if possible; if not, invest in a mini fridge and a chest freezer, or borrow them from a friend.

**STOCK UP ON HEALTHY
CONVENIENCES**

Consider filling the freezer with healthy frozen meals and veggies that you can heat in a microwave. Items that don't require refrigeration—rice, pasta, ramen noodles, canned beans, etc.—can save space if you're living out of a mini fridge. Use this time to enjoy the freedom from preparing complex meals.

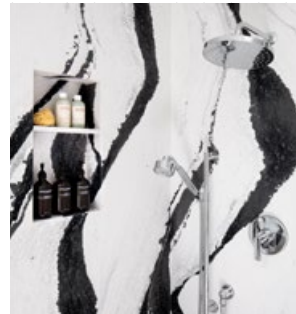
**TAKE TIME TO CELEBRATE
THE MILESTONES**

A major remodel can seem endless, so it's important to take time along the way to really notice and appreciate the progress. Write your family's names in a secret spot while the drywall is down, take in-progress pictures, and slow down to focus on each new element.

**BEYOND KITCHEN
COUNTERTOPS**

BRIGHT IDEAS

The eye-catching yet maintenance-free Cambria designs lend these quartz surfaces to applications beyond kitchen countertops. As you plan, get creative with the beauty and durability of Cambria.



▲ **SHOWER WALLS**
Say goodbye to mildew and hard-to-clean tile grout. Cambria's nonabsorbent surfaces won't harbor any bacteria.



▲ **VANITY**
Upgrade your vanity countertop to Cambria for an elegant effect that will last.



▲ **KITCHEN BACKSPASH**
Create a dramatic or neutral look with a backdrop that perfectly matches or complements your kitchen countertop.



▲ **FIREPLACE SURROUND**
A Cambria quartz fireplace surround creates a stunning living room focal point.

▶ TO SEE MORE APPLICATION INSPIRATION, visit CambriaUSA.com/Application

SQUEAKY CLEAN: How to care for your Cambria

While simple to clean, consider these tips to keep your Cambria looking brand new.



▲ **EVERYDAY CLEANING**
Spills can be wiped away with just warm water, a soft cotton cloth, and mild soap, if desired.



▲ **AVOID**
Don't use corrosive chemicals, like bleach, as they can damage Cambria, and sealers can cause the surface to dull in appearance.



▲ **USE CAUTION**
Excessive heat can damage Cambria, so keep a trivet on hand to protect your countertops from hot pans.

DRAFT PICKS

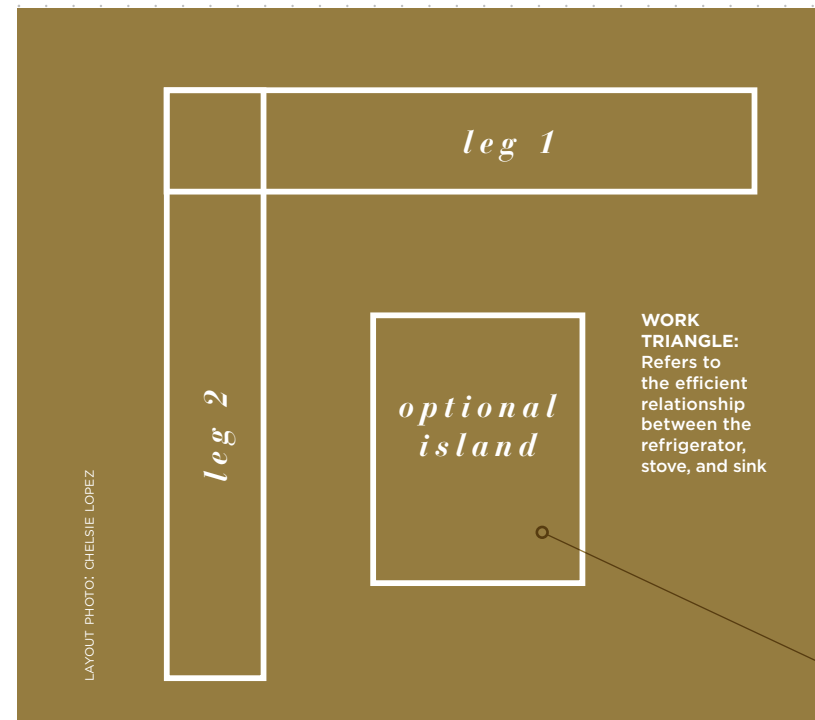
Five layouts for designing your dream kitchen.

1
L-SHAPE

Flexible and adaptable, the desirable L-shape layout places upper and lower cabinets plus major appliances and the sink on adjacent walls, minimizing the walking distance between them. One side of the "L" is usually longer than the other to provide more counter space, with the cooking and cleaning elements on one leg and the refrigerator and storage on the other.

CONSIDER THIS

Commonly utilized in vast open-plan areas, the L-shape leaves plenty of space for a substantial island that won't affect traffic patterns in the room.



LAYOUT PHOTO: CHELSEIE LOPEZ

WORK TRIANGLE: Refers to the efficient relationship between the refrigerator, stove, and sink



PAINT IT pretty

▲ **TRACTOR BARSTOOL IN WALNUT**, Craig Bassam for BassamFellows, dwr.com

▶ **DELGATIE™** Cambria, CambriaUSA.com



▲ **EBONIZED BLACK OVAL BOWL**, Peterman, jungleeny.com



▲ **SEAPEARL OC-19**, Benjamin Moore, benjaminmoore.com



▲ **CHEATING HEART 1617**, Benjamin Moore, benjaminmoore.com



▲ **JULIE WALL MOUNTED ARTICULATED POT FILLER IN BRASS**, Waterworks, waterworks.com



DESIGNER LOOK

Design shown: **DELGATIE™**

▶ TO SEE MORE KITCHEN INSPIRATION, go to CambriaUSA.com/Inspiration

2 ISLAND

Organizing upper and lower cabinets, a sink, and appliances along one wall yields a spare, minimal look with a shortage of counter space. Adding an island—or two—can resolve that issue and provide ample room for food prep and storage. Popular and great for functionality, the kitchen island also creates a natural gathering place and focal point for the room.

ADDED VALUE

An expansive kitchen can accommodate a pair of islands, which can provide extra seating and storage, another sink and stove, and an additional refrigerator and dishwasher.



CONCEPT
TO COPY

Design shown:
INVERNESS COBALT™

ISLAND TIME

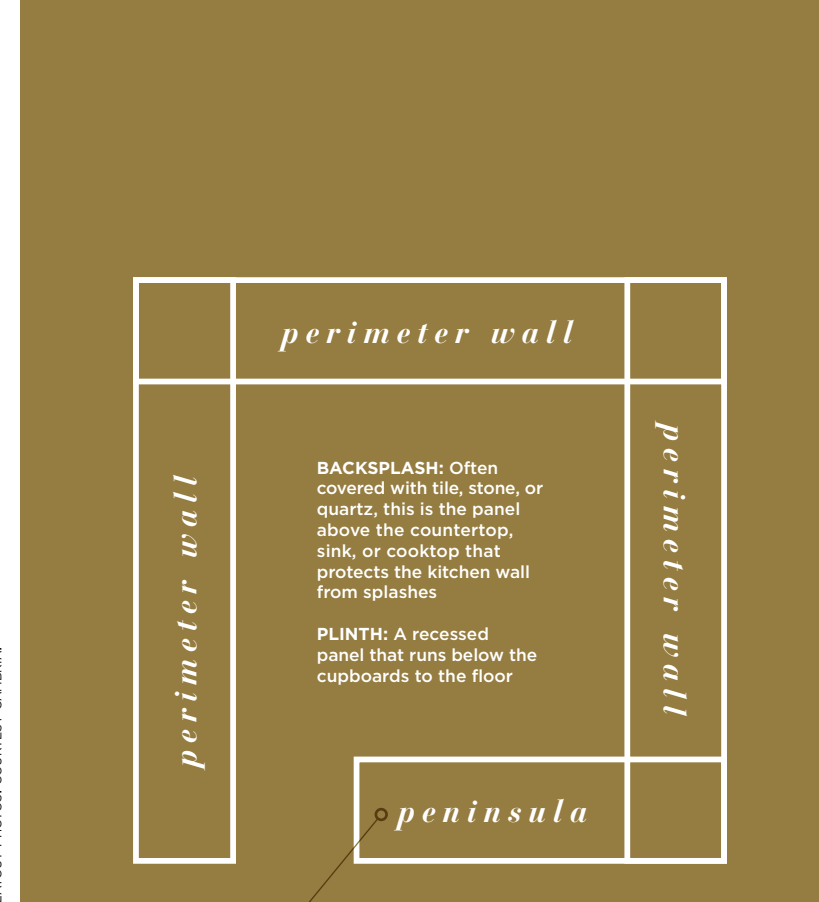
If a kitchen island is on your list of must-haves, consider its purpose. Will it be used solely as prep space or do double duty as a seating area? Answering these questions will ensure your island is designed for maximum functionality.

Island overhang: A kitchen island with seating will require a countertop that extends 12 to 18 inches beyond the cabinets to allow space for stools.

Counter stools vs. barstools: The island's height dictates the ideal style of barstools. Higher countertops (around 42 inches) will require 30-inch stools, while standard 36-inch-high countertops take 24-inch counter seats.

Waterfall islands: To showcase a particularly attractive surface, such as a quartz with bold veining, choose a waterfall edge, which lines one or both sides of the island as well as the top. This sleek look adds a sculptural element to the room.

GOOD ideas



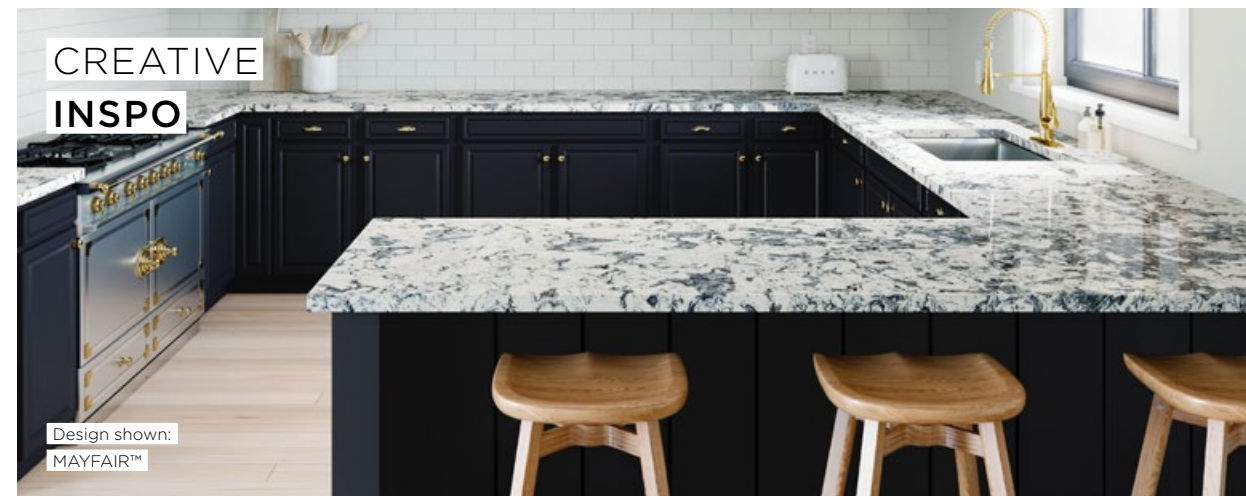
LAYOUT PHOTOS: COURTESY CAMBRIA.

QUICK THINKING

A peninsula can seamlessly integrate within the space or become a striking focal point when clad in materials that contrast with its surroundings.



CREATIVE INSPO



Design shown:
MAYFAIR™

CAN'T DECIDE WHICH STYLE IS RIGHT FOR YOU? Schedule a Cambria consultation at CambriaUSA.com /Cambria-Consultation.

3 PENINSULA

Ideal for smaller kitchens where an island might overwhelm, a peninsula extends from a wall or lower cabinetry, encouraging interaction. Infinitely versatile, it can provide additional prep space, a casual dining or bar area, and another spot for storage, either open or enclosed. The peninsula, essentially an attached island, can also act as a room divider, differentiating the kitchen area from the breakfast nook or an open-plan living area.



4 U-SHAPE / HORSESHOE

With cabinets, counters, and appliances arranged against three walls, the horseshoe configuration is best for creating the coveted, functional work triangle of stove, sink, and refrigerator. The layout often includes two parallel side walls and a central island allowing for easy traffic flow and workflow. A narrow U-shape is sometimes considered a galley kitchen (see opposite page), but keep in mind that adding too much space between the walls can reduce the efficiency between the work areas (see *Words of Advice* below).

LAYOUT PHOTO: COURTESY CAMBRIA.



5 GALLEY

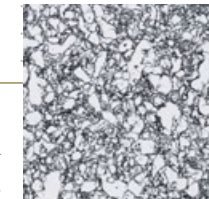
A narrow walkway with cabinets and appliances lining opposite walls, a galley kitchen (the name is derived from those on ships) offers efficiency and utility. It's perfect for the practical homeowner who separates cooking from socializing. To open up the space, consider replacing one of the runs with a parallel island allowing for flexibility.

EXPERT TIP

Functional doesn't mean boring. Upper and lower cabinetry can vary in color, material, and style. Open shelving can showcase eye-catching china, while expanses of wall can highlight a dazzling backsplash.

TOP picks

ROSE BAY™
Cambria,
CambriaUSA.com



WALDORF CHANDELIER
IN ANTIQUE BRASS,
Arteriors Home,
arteriorshome.com



CEDAR MOUNTAINS 706,
Benjamin Moore,
benjaminmoore.com



FIELDSTONE 1558,
Benjamin Moore,
benjaminmoore.com



BAUHAUS PULL,
Ashley Norton,
ashleynorton.com



ICE CAP 1576,
Benjamin Moore,
benjaminmoore.com

JUSTINA RIBBED WHITE VASE, CB2, cb2.com



LOOKING FOR THE PERFECT COUNTERTOP? Go to CambriaUSA.com/Designs

WORDS OF ADVICE

The sweet spot for this design is a kitchen between 10 and 18 feet. Beyond that size, a center island might be needed to reduce the walking distance between work spaces.

FINISHING touches

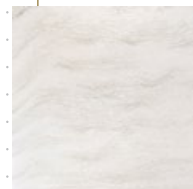
SEA GULL COLLECTION MITTE FLUSH MOUNT LIGHT, Visual Comfort, visualcomfort.com



KRAVET WOOSTER PULL IN BLACK ACRYLIC WITH POLISHED BRASS, Modern Matter, modern-matter.com



HANDLELESS WALL OVEN IN GRAPHITE GREY, Miele, mieleusa.com



IRONSBRIDGE MATTE™, Cambria, CambriaUSA.com



SEAPEARL OC-19, Benjamin Moore, benjaminmoore.com



CHEATING HEART 1617, Benjamin Moore, benjaminmoore.com



DESIGNER
LOOK

Design shown:
IRONSBRIDGE MATTE™

CASE STUDY



Design shown:
ROSE BAY™

GALLEY PHOTO: AIMEE MAZZENGA

SMALL SPACES

An intimate kitchen can still be beautiful and functional. Consider these tips to optimize your space.

The goods: A standard 30- to 36-inch-wide oven and cooktop range can often take up much needed countertop space. Look for conveniently sized 20- to 24-inch-wide ranges that can slide into tight spaces. If passages are tight, consider a side-by-side refrigerator; the doors require less room to swing open.

Think vertical: Eliminate the soffit and extend cabinets all the way to the ceiling. You can keep infrequently used items up high.

Embrace color: Bright hues can infuse energy and bounce light around a room. Consider a light backsplash paired with darker cabinetry and countertops to open up the kitchen.

Get creative: Look for space-saving dishwashers. You'll find 24-inch models with all the cycles you're accustomed to. Instead of a breakfast nook or kitchen table, add a counter bar with stools, or better yet, create a peninsula that provides seating and a delightful transition between spaces.

GET THE LOOK

Three creative designs to inspire your own projects.



MODERN *rustic*

Modern rustic vibes blend with a relaxed West Coast aesthetic in this Newport Beach home for a young family, designed by architect Eric Olsen and interior designer Raili Clasen.

Wide Open Spaces: Play to a casual indoor-outdoor atmosphere with open shelving adorned with a collection of white pottery. A durable quartz surface, such as Cambria Whitehall™ used here for the perimeter and island countertops, complements the look. An almost-black stain on the cabinetry adds depth and contrast.

International Influence: Make your walls the center of attention with a bold backsplash. In this kitchen, Moroccan-inspired patterned cement tiles by Ann Sacks behind the range and cooktop and over the wet bar add an old-world European vibe to the mostly laid-back feel.

Bright Spot: Go a step beyond traditional and recessed lighting with decorative fixtures. A trio of clean-lined pendants over the island and a row of bulb lights above the oak table take full advantage of the open, airy space.



LOOKING FOR THE PERFECT COUNTERTOP? Go to CambriaUSA.com/Designs



CLASSIC *luxé*

Although this kitchen has a lot of visual elements, it still reads as clean and refined due to the consistency of materials. A layered effect of dramatic color and gold tone fixtures against the soothing tones of Cambria Beckington™ on the countertops and full-height backsplash provides the harmony of a timeless space.

Turn Back Time: Retro-inspired appliances, sink faucet, and drawer pulls provide a nod toward nostalgia with all the modern convenience of today's most up-to-date amenities.

Design Statement: The black Kohler farmhouse sink framed with an elegant Cambria decorative countertop edge is the perfect rich statement to set the tone for this kitchen. The combination of the deep blue cabinetry and cool-toned veining in the countertops and backsplash is the epitome of classic meets modern maximalism.

Finishing Touches: Offer interest with mixed metals. Vintage style cookware, lighting, and floor coverings make the perfect accents.

SPA *Chic*

Industrial materials and calming colors bring an urban modern aesthetic to this primary bathroom that feels like a retreat space.

Outside the Box: Get creative with smaller spaces, such as in this master bathroom where a Kohler tub was placed outside to open up the room. A wall of rusted Cor-Ten steel provides privacy.

Beyond Countertops: Don't stop at counters when incorporating an elegant design like Cambria's Ella™ into a space. Carry the effect up the wall with a backsplash and above the mirror.

Practical Magic: Up the functionality of your master suite with a customizable vanity. This Cartesian vanity by Robern offers concealed storage, a light to illuminate drawer interiors and adjustable dividers for easy storage solutions.



SIMPLE SELECTION

Cambria quartz surfaces are both design inspiration and the perfect solution. We carefully curate our vast collections to intrigue and impress—down to the very last detail. While our simple selection guide makes finding the ideal Cambria surface easy and enjoyable.

1 PICK YOUR DESIGN

Choose from the broadest and most innovative design palette in the industry.

2 CHOOSE A FINISH

Select from our high-performance finishes to beautifully enhance your surface.

3 SELECT AN EDGE

Add the perfect finishing touch to your project with edge profiles.

 Visit CambriaUSA.com/Designs
TO SEE OUR FULL DESIGN PALETTE

Call 1-866-CAMBRIA (1-866-226-2742) to confirm design availability.



Design shown:
WHITE CLIFF™



LIGHT & AIRY



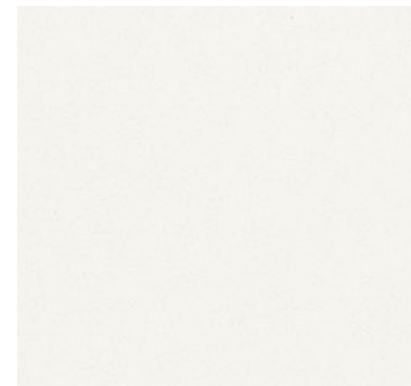
WHITE CLIFF™



MINNESOTA SNOW™*



DELGATIE™



WHITEHALL™



FOGGY CITY™*



EVERLEIGH™



SMITHFIELD™



BIG SUR MIST™*



IRONSBRIDGE™



SALT LAKE™



NEWPORT™



TORQUAY™



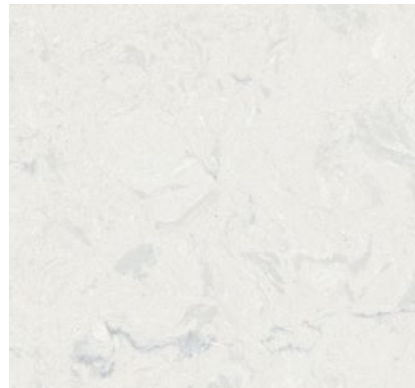
KIRKSTEAD™



HIGHGATE™



COLTON™



WEYBOURNE™



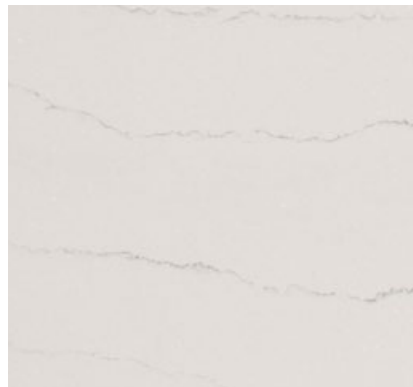
BECKINGTON™



ABBEY™



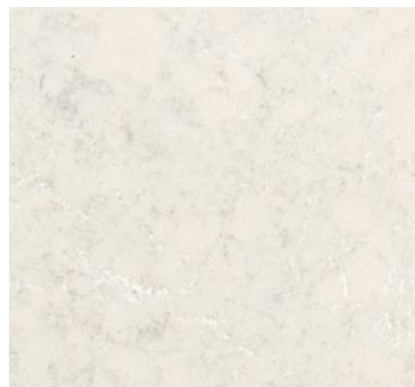
SWANBRIDGE™



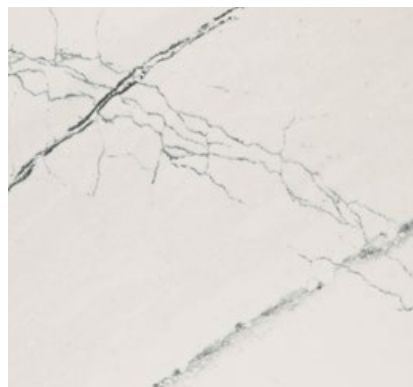
ELLA™



HAWKSMOORE™



MALVERN™



GLADSTONE™



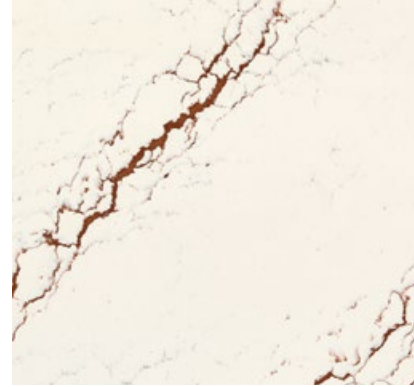
SUTHERLAND™



Design shown:
AINSLEY MATTE™



BERKSHIRE STEEL SCULPTED™



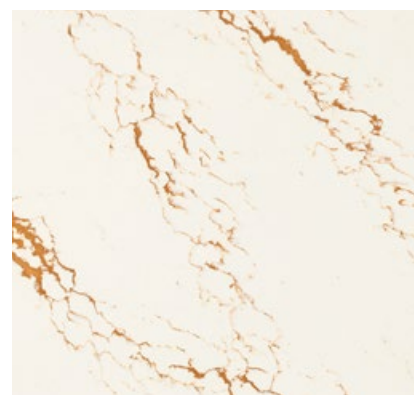
INVERNESS BRONZE™



WHITNEY™



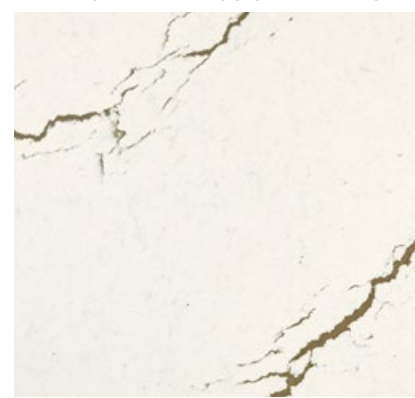
BERKSHIRE BRASS SATIN RIDGE™



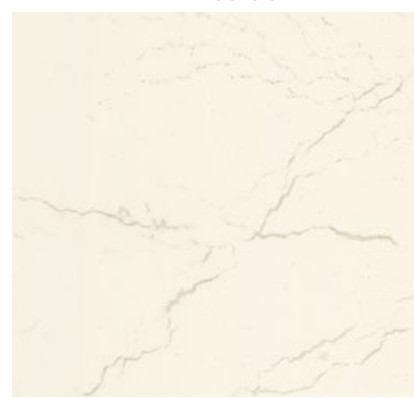
INVERNESS GOLD™



AINSLEY™



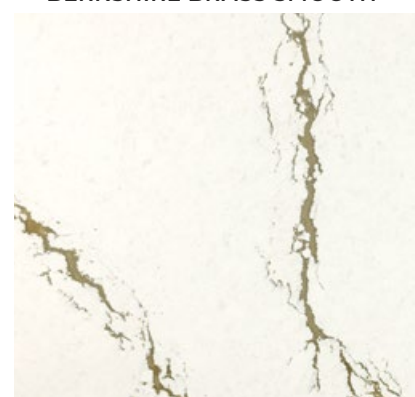
BERKSHIRE BRASS SMOOTH™



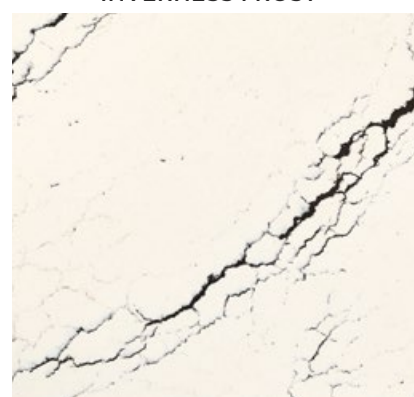
INVERNESS FROST™



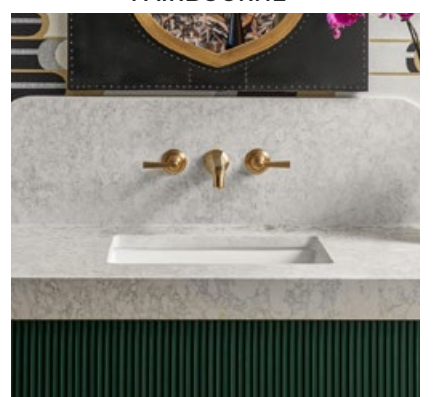
FAIRBOURNE™



BERKSHIRE BRASS SCULPTED™



INVERNESS PLATINUM™



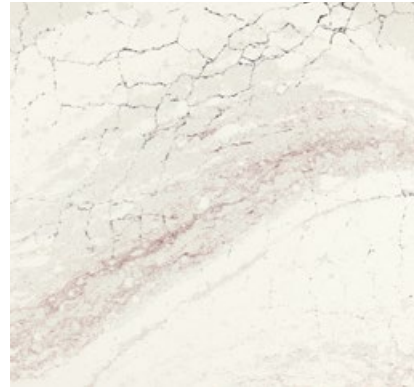
BOLD MOVEMENT



SOUTHPORT™



BRITANNICA WARM™



HAILEY™



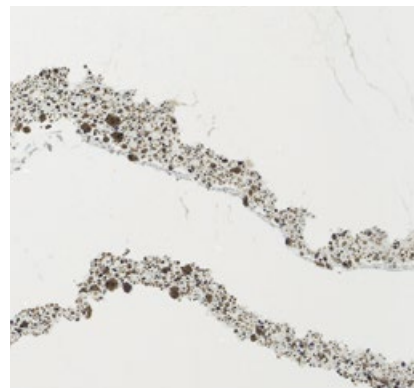
NOTTING HILL™



HARLOW™



BRITANNICA GOLD COOL™



ANNICCA™



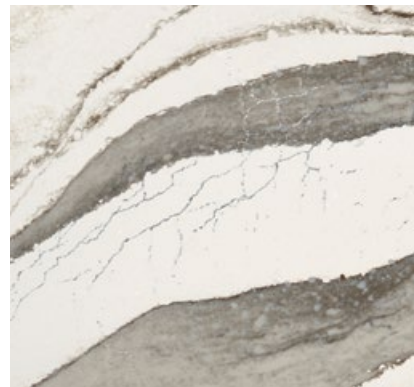
HEMSWORTH™



LAKEDALE™



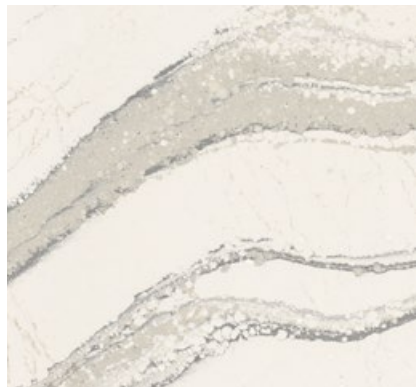
BRITANNICA GOLD WARM™



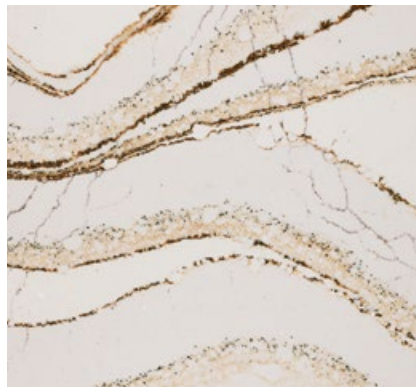
SKARA BRAE™



OAKLEIGH™



BRITANNICA™



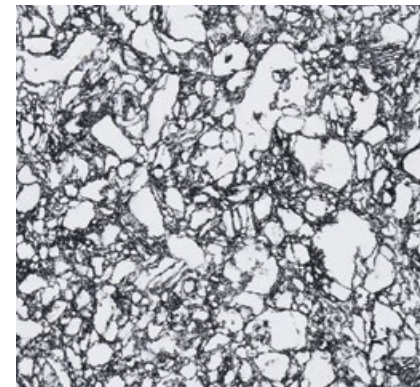
CLOVELLY™



ARCHDALE™



BENTLEY™



ROSE BAY™



SUMMERHILL™

Design shown:
MAYFAIR™



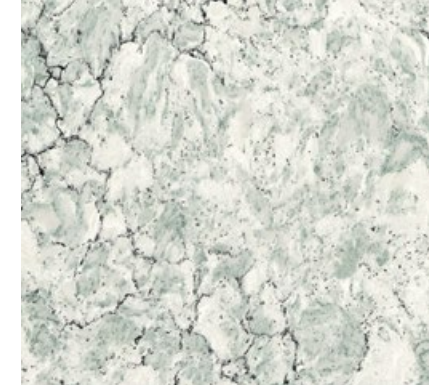
BLUES & GREENS



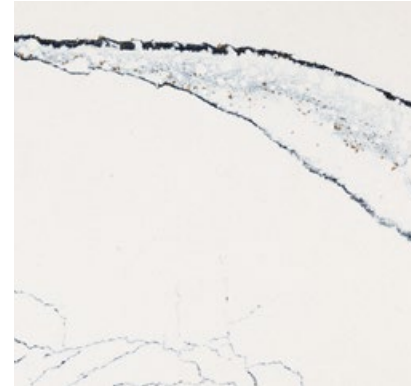
TRAVELLA™



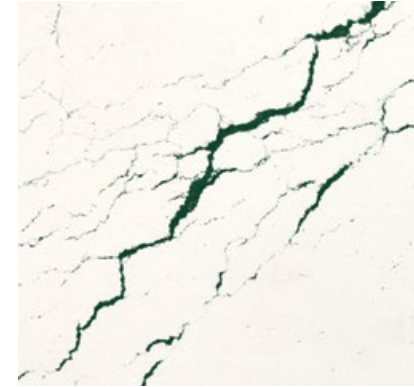
INVERNESS COBALT™



KENDAL™



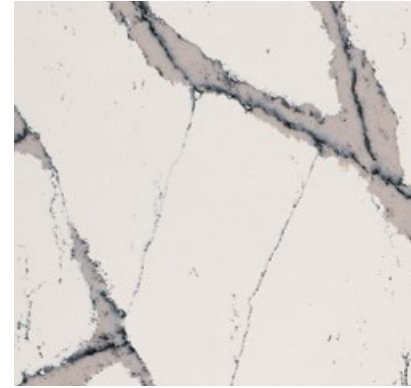
PORTRUSH™



IVYBRIDGE™



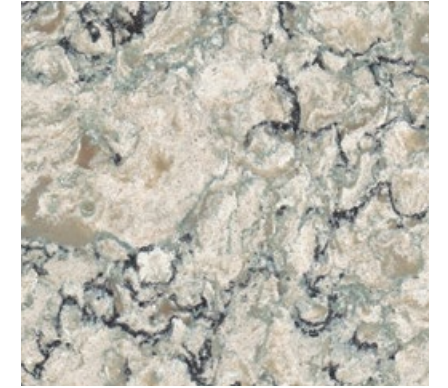
KELVINGROVE™



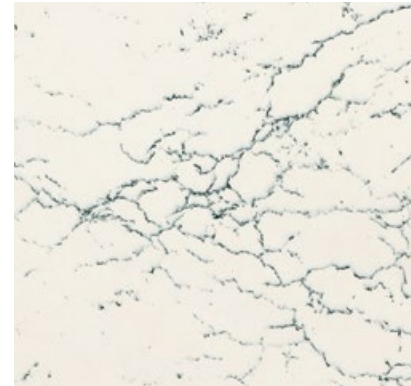
HARROGATE™



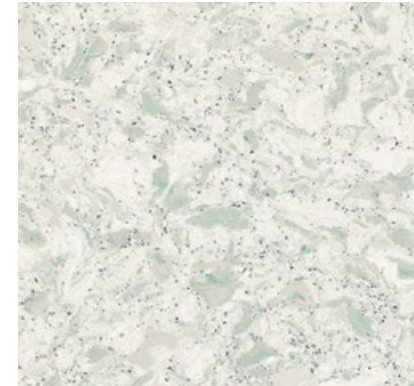
MONTGOMERY™



PRAA SANDS™



RUXLEY™



CLIFTON™



MAYFAIR™

EARTHY TONES



HERMITAGE™



BELLINGHAM™



BERKELEY™



BERWYN™



NEW QUAY™



HALEWOOD™



CROWDALE™



GALLOWAY™



BRADSHAW™



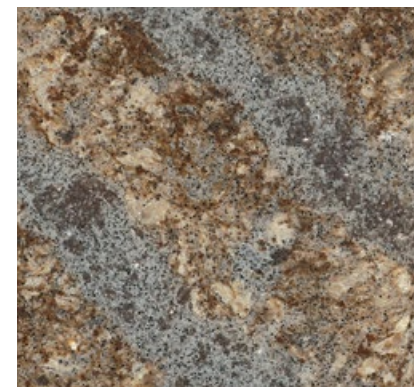
BEAUMONT™



WINDERMERE™



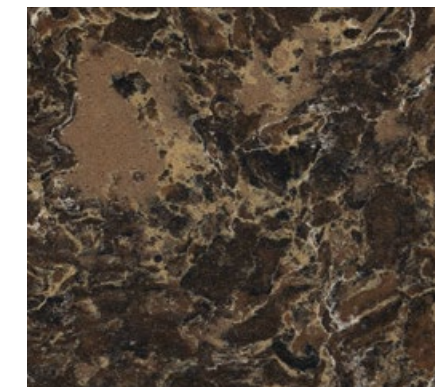
CANTERBURY™



HELMSLEY™



LANGDON™



LANESHAW™

Designs shown:
BRIDPORT™
CAMBRIA BLACK™
SUTHERLAND™



SHADES OF GRAY



SANDGATE™



WINDRUSH™



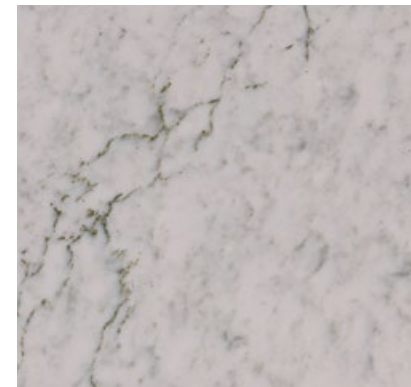
MINERA™



PENDLE HILL™



DUNMORE™



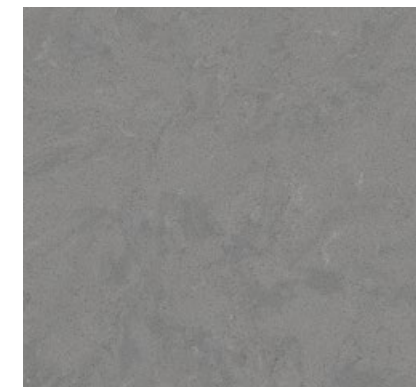
BRIDPORT™



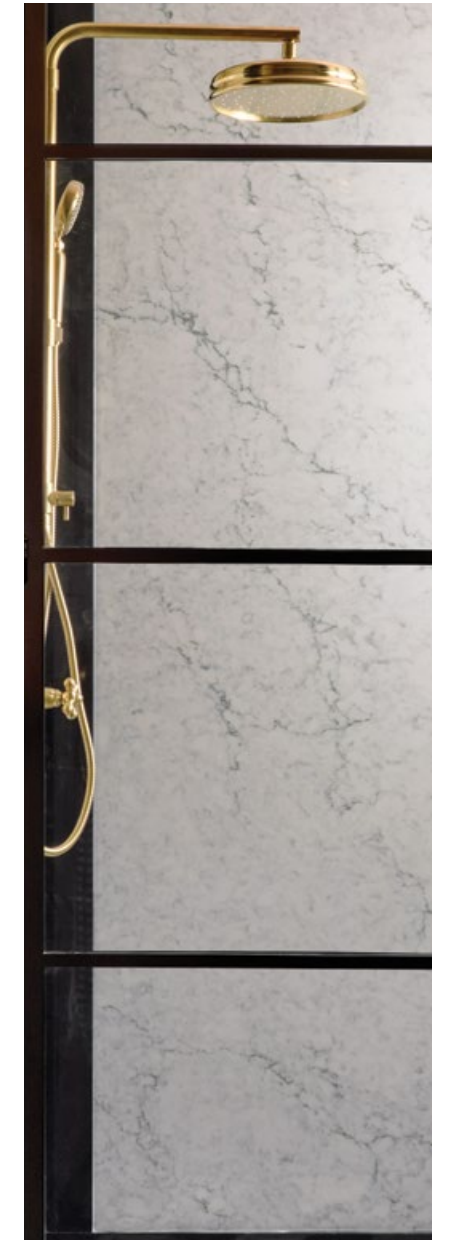
GREYSTONE™



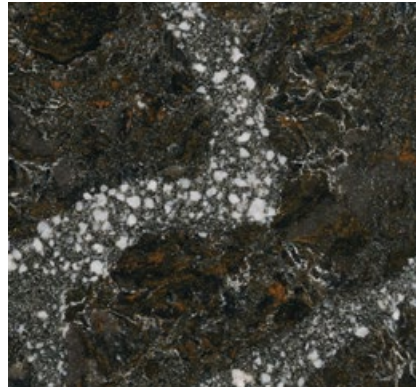
BRADWELL™



CARRICK™



DARK & DRAMATIC



ELLESMERE™



BLACKWOOD™



MERSEY™



ARMITAGE™



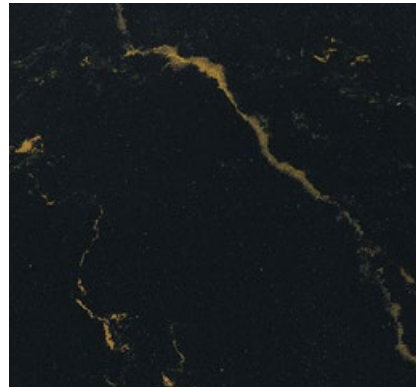
GOLDEN DRAGON™



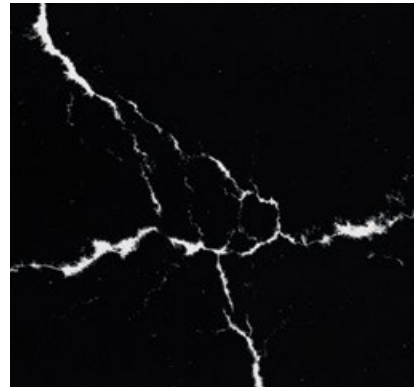
DELAMERE™



CHARLESTOWN™



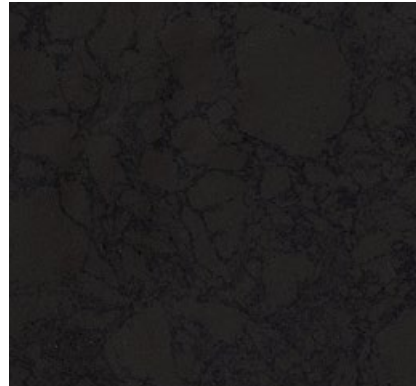
WOODCROFT™



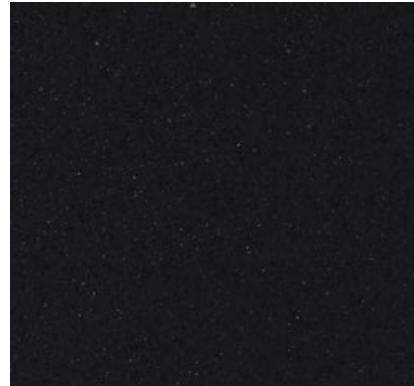
BLACKBROOK™



MAMMOTH CAVE™*



BLACK ROCK™*



BLACKPOOL MATTE™

Design shown:
BLACKBROOK MATTE™





Design shown:
HERMITAGE™

HIGH GLOSS & MATTE

MASTERED

Every Cambria finish offers the same optimal performance—from the radiant shine of high gloss to the subtle sheen of Cambria Matte®—backed by our industry-leading transferable Full Lifetime Warranty.

HIGH GLOSS

The brilliant shine of Cambria high gloss finish is as elegant as it is eye-catching. Its reflective surface showcases Cambria designs in striking detail and spectacular clarity.

CAMBRIA MATTE

Cambria Matte offers the same unrivaled performance, durability, and longevity of Cambria high gloss—but with soft radiance and a smooth feel all its own.

Visit Shop.CambriaUSA.com to order a sample or visit a Cambria Gallery or Showroom to see and feel the difference in our designs and finish options.

 FIND A CAMBRIA GALLERY OR SHOWROOM:
CambriaUSA.com/Galleries

Design shown:
HERMITAGE MATTE™

LEADING EDGES

Customize our quartz surface applications with edge profiles ranging from keen and contemporary to turned and traditional. Because our quartz designs incorporate veining, movement, and tones throughout the slab, the beauty of our innovative surfaces can carry through the edge profile selection.



Design shown:
BERKSHIRE BRASS SCULPTED™



AN INNOVATIVE TOUCH

The world's most exquisite details and inviting textures are found on Cambria surfaces.

Make a stylish statement with our disruptive designs and trailblazing textures. From the revolutionary alloy veining in our Berkshire™ designs, to the gently debossed, lightning-inspired veins in our Inverness™ offerings—our stunning surfaces reimagine luxury.

NEXT STEPS

Download this Kitchen & Bath Design Planner to make notes, determine your goals, and crystallize your vision for your space(s). Then schedule a consultation with an expert, either virtually or in person, at a Cambria Showroom near you to ask questions, view samples, and talk through your ideas. Our experts can also provide referrals to trusted design partners.

 TO SCHEDULE A CONSULTATION
visit CambriaUSA.com/Cambria-Consultation.



Designs shown:
 WOODCROFT™
 BRITTANICCA GOLD WARM™



TRANSFERABLE FULL LIFETIME WARRANTY

Cambria surfaces are backed by a transferable Full Lifetime Warranty. Transferable means the coverage is passed on to anyone who purchases the home. A warranty this strong can add to the value of the home.

QUESTIONS?

Our knowledgeable Customer Care representatives in Minnesota are here to help.

Call: **1-866-CAMBRIA** (1-866-226-2742)
 Email: **CustomerService@CambriaUSA.com**
 Visit: **CambriaUSA.com/Contact**

COUNTERTOP COMPARISON

	MARBLE	GRANITE	CAMBRIA
DURABLE	●○○	●●○	●●●
MAINTENANCE FREE	○○○	○○○	●●●
STAIN RESISTANT	○○○	○○○	●●●
FOOD SAFE	○○○	○○○	●●●
PRODUCT WARRANTY	NONE	NONE	FULL LIFETIME WARRANTY

LOW PERFORMING ○○○ ●○○ ●●○ ●●● HIGH PERFORMING



CAMBRIA®

THE FINEST COUNTERTOP
MAKERS IN THE WORLD™

TO EXPLORE DESIGNS, ORDER SAMPLES,
AND MORE, GO TO CambriaUSA.com

1-866-CAMBRIA (1-866-226-2742)



**FAMILY OWNED
AMERICAN MADE**